

PRINCESS V48 • 2016/2017

Ref:PB2312

PRICE: £635,000 INC VAT



OPEN TO PART EXCHANGE • PRINCESS TECHNICAL ORIENTATION INCLUDED

PROFESSIONAL PHOTOGRAPHY, 3D VIRTUAL TOUR AND VIDEO AVAILABLE

2017 Model, Built 2016 • Twin Volvo IPS 600 435hp diesel engines • Volvo joystick control • Dockmate Twist • White hull • Walnut interior woodwork, satin finish • New aft saloon curtain • New blinds for electric roof • New wine cooler • New Lumishore underwater lights x 6 • New docking cameras • Ice Crystal White galley worktop • Raymarine chartplotter and GPS • Raymarine autopilot • Bowthruster • Onan 11kW generator • Reverse cycle air-conditioning • Teak laid cockpit, foredeck & side decks • Cockpit wetbar with sink & electric BBQ • Electro-hydraulic bathing platform • Balance of insurance-backed warranty*

PLEASE CONTACT US REGARDING THIS PRINCESS V48 DECK SPORTS CRUISER FOR SALE

- Established over 40 years.
- Central agency for over 90 brokerage yachts for immediate delivery.
- Specialists in international delivery and the sourcing of yacht taxation advice.
- Access to the global Princess support network.

PRINCESS V48 SPECIFICATION

BUILDER/DESIGNER

Year: 2016
Construction: GRP

ENGINES

No. of Engines: 2
Make: Volvo
Model: IPS 600
Fuel Type: Diesel
Hours: 650
Total Power: 870 hp

ACCOMODATION

Cabins: 2
Heads: 2

DIMENSIONS

Length: 15.49 m / 51 ft 9 in
Beam: 4.11 m / 13 ft 5 in

LOCATION

Chichester, United Kingdom

INVENTORY

HULL COLOUR

- White hull

DECK EQUIPMENT

- Teak-laid transom platform, cockpit deck, foredeck and side decks - finished with Semco deck treatment
- LED courtesy lights (new 2024)
- Stainless steel backlit name with remote control and RGB lighting (new 2024)
- Electro-hydraulic bathing platform with raise/lower mechanism, foldaway swimming ladder and hot and cold shower
- Cockpit sun awning with complete full height cockpit cover with stainless steel
- Cockpit wetbar inc sink, storage and BBQ
- Reversible electric anchor winch with foredeck and helm position controls
- Cockpit table (oiled), with telescopic leg and infill cushion
- Charcoal sunbrella canvas covers
- Reticulated foam fitted to all exterior seating and sunpad
- Foredeck sunbed cushions and cockpit seating including helm seats in Movida Met Ice with Met Sterling contrast
- Lumishore underwater transom Blue and White lights - four on stern, one on port and one on starboard side (new 2024)
- Self-stowing 20kg/44lbs Delta anchor with 60m of chain
- Stainless-steel cleats, fairleads and handrails

- Lockable gas strut assisted hatch to engine room
- Liferaft storage locker
- Locker housing 240V shore support inlet
- Locker with remote fuel cocks
- Transom hatch to stern lazarette

NAVIGATION EQUIPMENT

- Volvo joystick control
- Dockmate Twist remote control (new 2024)
- Aft facing mast mounted docking camera (new 2024)
- Portside mounted colour coded docking camera (new 2024)
- Raymarine e165 chart plotter/GPS with external GPS and 15.4" brilliant colour multifunction display
- Raymarine p70r autopilot and rate gyro
- Raymarine HD colour radar with 24" 4kW radome
- European version plotter charts
- International VHF
- AIS Class B transponder and receiver
- Full engine instrumentation including fuel gauges, joystick control and rudder position indicator
- Controls for windscreen wipers, bilge pump, anchor winch and trim tabs
- Remote control searchlight
- Loud hailer and horn
- USB charging points (Type A+C)

SHIP'S SYSTEMS

- VirCru remote monitoring system for bilges, shore power, batteries, GPS location
- Bowthruster
- Onan 11kW/50Hz diesel generator
- Reverse cycle air-conditioning/heating to all cabins and bathrooms
- Power-assisted electronic steering system with hydraulic back-up
- System 2 holding tank
- UK 220V/240V sockets
- 4 x heavy-duty batteries for engine starting
- 4 x heavy-duty auxiliary batteries
- 40 amp battery charger charging both banks of batteries via automatic switch charging system
- LED lighting throughout
- Polarity check system
- Earth leakage safety trip
- Power points to all areas
- 4 x fire extinguishers
- Engine fire system
- 2 x galvanic isolators

INTERIOR FITOUT

Walnut interior woodwork, satin finish Saloon aft curtain (new 2024) Oceanair blinds fitted to electric roof glass panels (new 2024) Ice Crystal galley worktop Quessant saloon upholstery Two stools in saloon Helm seats in black leather

- Two cabin layout with full beam master cabin and forward VIP guest cabin Scissor berths in forward cabin Second access door fitted to forward bathroom
- Lower dinette table converts to double berth, with telescopic legs and infill cushion
- Safe in master cabin

INTERIOR EQUIPMENT

- 3-zone hob with flame-failure device
- Combination microwave/conventional oven with grill
- Stainless steel sink with monobloc mixer tap
- Full-height fridge/freezer
- Storage cupboards, drawers and lockers
- New wine cooler in saloon (new 2024)

AUDIO VISUAL EQUIPMENT

- 40" Samsung Smart TV with Sony DVD on a powered lift mechanism fitted to upper deck saloon (new 2024)
- 32" LED with Fusion MS-AV750 radio/DVD/MP3 player with Bluetooth fitted to lower saloon
- 32" LED with Fusion MS-AV750 radio/DVD/MP3 player with Bluetooth fitted to owners stateroom
- 28" LED TV with Fusion MS-AV750 radio/DVD/MP3 player with Bluetooth fitted to forward guest cabin

OWNER AND BROKER COMMENTS

"Horatio" is an extremely well kept example of the ever popular Princess V48 Deck Saloon model. The current owner has invested in the yacht with many upgrades which will be appreciated by her new owner, particularly if one has an eye for detail. If condition is central to a prospective buyers search then "Horatio" is a must view, with a condition that will rival a new yacht. She was fully serviced by Princess Aftersales in Spring 2024.

* Unusually for a preowned yacht, she will carry the balance of insurance backed warranty that will cover electrical and mechanical breakdowns (subject to terms and conditions), which will provide additional peace of mind for her next owner.

DISCLAIMER

In this case we are acting as Brokers only.

The Vendor is not selling in the course of a business. Whilst every care has been taken in their preparation, the correctness of these particulars is not guaranteed. The particulars are intended only as a guide and they do not constitute a term of any contract. A prospective buyer is strongly advised to check the particulars and where appropriate at his own expense to employ a qualified Marine Surveyor to carry out a survey and/or to have an engine trial conducted which if conducted by us shall not imply any liability for such engine on our part.

PRINCESS V48 PHOTOS


PRINCESS
BROKERAGE INTERNATIONAL

EST 1964

OUR KNOWLEDGE IS YOUR LUXURY

> OPEN TO PART EXCHANGE

WE CAN HELP SPEED UP THE SALE THROUGH OUR OFFER TO UNDERWRITE A PART-EXCHANGE AGAINST THE BROKERAGE YACHT

> PRINCESS TECHNICAL ORIENTATION INCLUDED

AT NO ADDITIONAL COST, REGARDLESS OF WHERE THIS YACHT IS LOCATED, WE OFFER A COMPREHENSIVE TECHNICAL INTRODUCTION TO YOUR PURCHASE

> PROFESSIONAL PHOTOGRAPHY, VIDEO & 3D TOUR AVAILABLE

VIEW IMAGERY, VIDEO AND A 3D TOUR/WALKTHROUGH OF THIS YACHT ONLINE




PRINCESS
BROKERAGE INTERNATIONAL

brokerage@princess.co.uk

+44 (0)1489 557755

www.princessmotoryachtsales.com



PRINCESS V48 PHOTOS



PRINCESS V48 PHOTOS

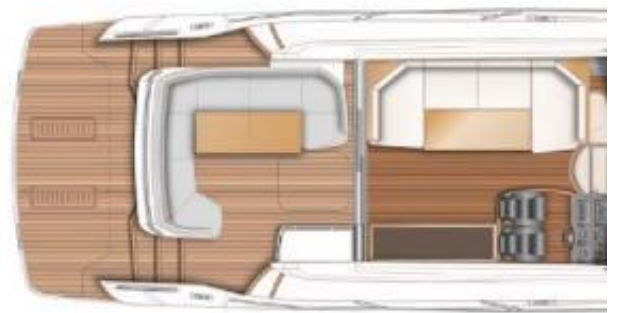






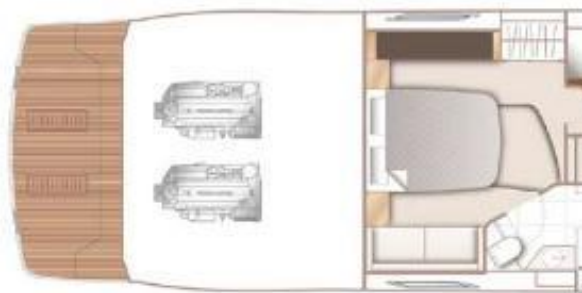






MAIN D

Princess V48 For Sale Main Deck layout



LOWER DE

Princess V48 For Sale Lower Deck layout

FINANCE AND INSURANCE
AVAILABLE ON THIS
PRINCESS YACHT

Contact
finance@princess.co.uk
insurance@princess.co.uk
for information.



PRINCESS MOTOR YACHT SALES



Princess F